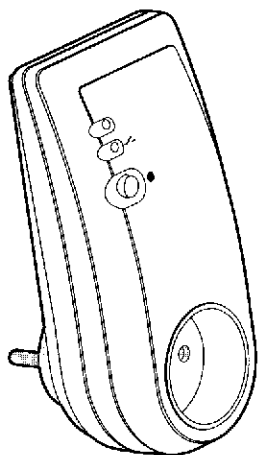
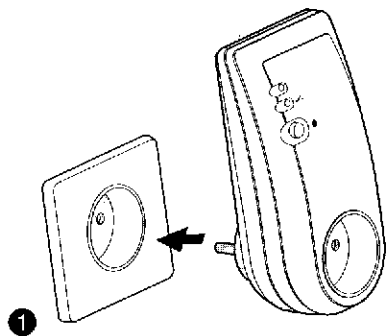


## EN Radio-controlled receiver 1DA

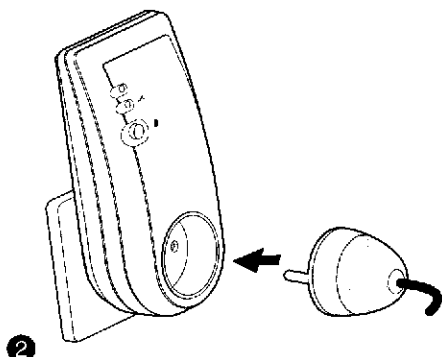


	230V~, 50 Hz - 2 VA
	Class I insulation
	868,7 MHz - 869,2 MHz Maximum radio power < 10 mW Receiver category: 2 100 - 300 m
	72 x 140 x 50 mm
	10A, 230Veff Cos φ=1
	IP 20
°C	0°C -> +40°C
	Important product information (ⓉⓉ)

## Installation



1 Plug the receiver directly into a wall socket. The power light comes on to indicate it has been switched on.

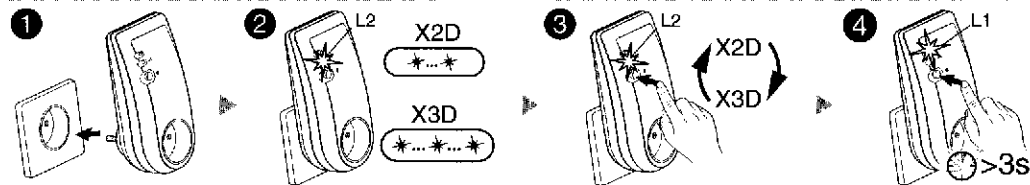


2 Then connect the plug on the electrical appliance's, which will be controlled by this receiver.

## Special mode without thermostat

Without any associated thermostat or without any signal from the thermostat for more than one hour, the receiver will work in a special mode (30% in PI regulation, OFF in On/Off regulation). The two LEDs will flash simultaneously. To switch to the continuous heating mode (100%), press the receiver button once. The LED 1 will stop flashing (ON) and the LED 2 will continue to flash. Press one more time the receiver button to go back to the previous mode.

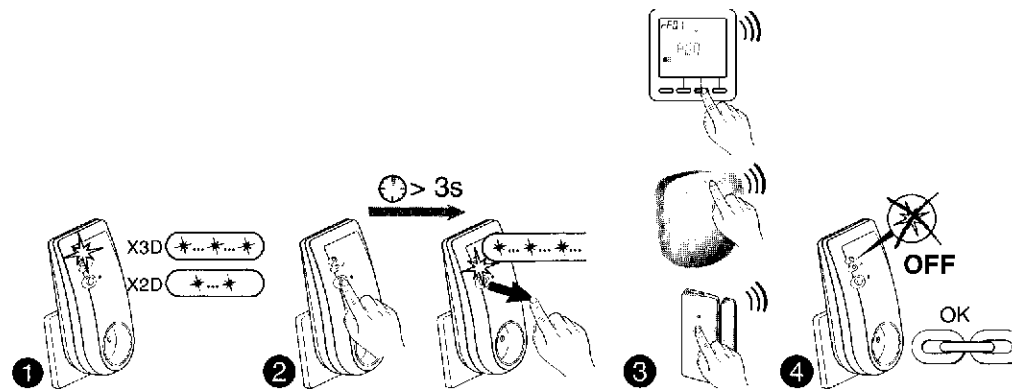
## X3D -> X2D / X2D -> X3D



When the unit is switched on, the L2 LED flashes (twice (X2D), 3 times (X3D)).

- Press the button briefly to toggle between them.
- Confirm by pressing the button for 3 seconds until LED L1 flashes. Release.
- You can now associate the transmitter (see transmitter manual).

## Association [16 max.]



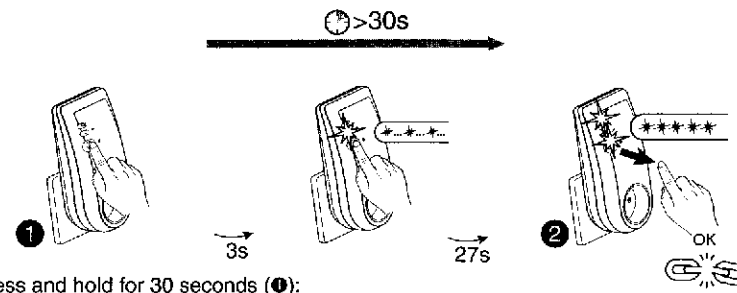
1 When switching on the installation (Ⓣ) Wait until the LED flashes: 2 times (X2D) or 3 times (X3D).

2 Press the receiver button for 3 seconds until its LED flashes. Release. **!** When associating a Tydom 1.0 (smartphone control), press again but briefly the receiver button. Release. The LED flashes quickly. Geben Sie über den Sender die

3 Send the association command to the transmitter (refer to the user guide).

4 Make sure that the receiver LED has stopped flashing. The products are associated.

## Delete associations



Press and hold for 30 seconds (Ⓣ):

- after 3 seconds, the LED flashes slowly.
- Keep the receiver button pressed until both LEDs flash. Release the button (Ⓣ).